

EML4-ALK

Catalog Number: 26226

Gene Symbol: EML4-ALK

Description: Anti-EML4-ALK Mouse Monoclonal Antibody

Background: EML4-ALK is a fusion-type protein kinase that can be found in many tumors, such as anaplastic large cell lymphoma, inflammatory myofibroblastic tumor, neuroblastoma, and NSCLC, and so on. It is generated as the result of a small inversion within the short arm of human chromosome 2.

EML4-ALK protein often promotes and maintains the malignant behavior of the cancer cells by activating the MAPK, PI3K/AKT and JAK/STAT3 pathways.

Immunogen: A synthetic peptide from the internal region of EML4-ALK of human origin

Tested Applications: ELISA, WB, IF, IHC

Recommended Dilutions:

ELISA:	1:1000-1:5000
WB:	1:500-1:2000
IF:	1:50-1:100
IHC:	1:50-1:100

Concentration: 1 mg/ml

Host: Mouse

Clonality: Monoclonal

Isotype: IgG

Purity: Purified from ascites

Format: Liquid

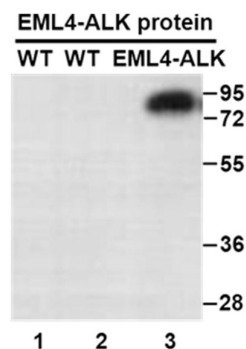
Preservative: No

Constituents: PBS (without Mg²⁺ and Ca²⁺), pH7.4, 150 mM NaCl, 50% glycerol

Species Reactivity: Recognizes T41A mutant, but not wild-type EML4-ALK of vertebrates.

Storage Conditions: Store at -20°C. Avoid freeze / thaw cycles.

Western blot:

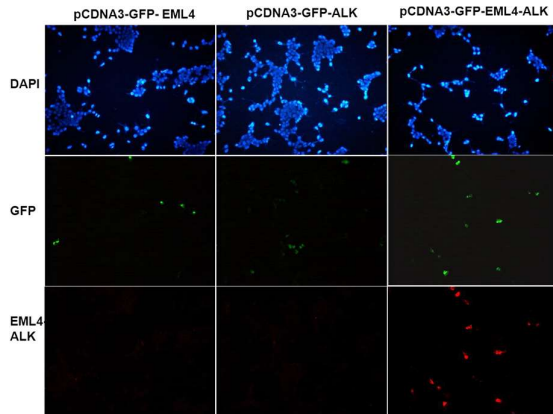


WB: Anti- EML4-ALK mAb
Western blot analysis of recombinant EML4-ALK and wild type proteins.

Purified His-tagged EML4-ALK protein (lane 3), corresponding wild-type EML4 protein (lane 1) and wild-type ALK protein (lane 2) were blotted with anti-EML4-ALK monoclonal antibody (Cat. # 26242).

FOR RESEARCH USE ONLY. NOT FOR DIAGNOSTIC APPLICATIONS

Immunofluorescence:



Immunofluorescence of cells expressing EML4-ALK proteins with anti-EML4-ALK antibody.

HEK293T cells were transfected with pCDNA3-GFP-EML4 (WT) plasmid (left column) or pCDNA3-GFP-ALK (WT) plasmid (middle column) or pCDNA3-GFP-EML4-ALK plasmid (right column), then fixed and stained with anti-EML4-ALK monoclonal antibody (Cat. #26242).

FOR RESEARCH USE ONLY. NOT FOR DIAGNOSTIC APPLICATIONS